

TEST REPORT

Applicant: Flashbay Electronics
Address: Building2 ,Jixun Industrial Park ,Xinjiao ,Dong'ao Village ,Shatian Town ,Huiyang District ,Huizhou City , Guangdong Province,P.R.China

The following sample(s) was/were submitted and identified on behalf of the client as:

Sample name: Bluetooth Speakers
Model: Seed/SD
Manufacturer & factory: Flashbay Electronics
Address: Building2 ,Jixun Industrial Park ,Xinjiao ,Dong'ao Village ,Shatian Town ,Huiyang District ,Huizhou City , Guangdong Province,P.R.China

Sample No.: S241022030048
Sample Received Date: 2024-10-24
Testing Period: 2024-10-24~ 2024-12-10

Test Requirement:

As specified by client, to determine the Lead(Pb), Cadmium(Cd), Mercury(Hg), Hexavalent Chromium (Cr(VI)), Polybrominated Biphenyls(PBBs), Polybrominated Diphenyl Ethers(PBDEs), Bis-(2-ethylhexyl) Phthalate (DEHP), Benzyl butyl Phthalate (BBP), Dibutyl Phthalate (DBP) and Diisobutyl Phthalate(DIBP)contents in the submitted sample(s) in accordance with RoHS Directive (EU) 2015/863 amending Annex II to Directive 2011/65/EU.

Conclusion

Pass

Test Result(s): Please refer to the following page(s);

Test Method: Please refer to the following page(s);

Compiled by: Zane. W Reviewed by: Luetta Mo
Approved by: Moy Li Date: 2024-12-11

Sample Description:

No.	Sample name	Description
1	Shell	Brown wood shell
2		Black plastic sheet with glue
3		White plastic shell
4		White foam glue
5		Silver metal rivet
6		Gray rubber pad
7		Transparent double-sided adhesive
8		Silver metal screw(large)
9		Silver metal screw(small)
10	Microphone	Black rubber pad
11		Black felt with glue
12		Microphone body
13		Red wire jacket
14		Black wire jacket
15		Wire core
16	Speaker	Silver metal shell
17		Silver metal of magnet
18		White cardboard
19		Silver metal contact pin
20		Tin solder
21		Silver metal rivet
22		Cupreous metal silk
23		Black rubber ring
24		Transparent colloid
25		Black paper cone
26		Black fabric
27		Cupreous metal coil
28		Yellow pieces of paper
29		Brown tape
30		Black plastic sheet
31		Red wire jacket
32		Black wire jacket
33	Wire core	
34	PCBA TB PCB01-type C v0.5	Green PCB
35		Silver metal shell of type-c interface
36		Gray plastic of type-c interface
37		Silver metal pin of type-c interface
38		Black plastic button of contact switch
39		Silver metal sheet of contact switch
40		Silver metal shrapnel of contact switch

41	PCBA TB PCB01-type C v0.5	Black plastic base of contact switch
42		Tin solder
43		Aluminum shell of electrolytic capacitor
44		Anode foil of electrolytic capacitor
45		Cathode foil of electrolytic capacitor
46		Electrolytic paper of electrolytic capacitor
47		Rubber pad of electrolytic capacitor
48		Electrode pin of electrolytic capacitor
49		Black plastic base of electrolytic capacitor
50		SMD chip
51		SMD crystal
52		SMD inductor
53		SMD LED
54	Battery	Yellow transparent adhesive tape
55		Transparent double-sided adhesive
56		Green PCB of PCB
57		Tin solder of PCB
58		Silver metal sheet of PCB
59		SMD resistor of PCB
60		Red wire jacket
61		Black wire jacket
62		Wire core

Test Result(s):
Lead(Pb), Cadmium(Cd), Mercury(Hg), Hexavalent Chromium (Cr(VI)), Polybrominated Biphenyls (PBBs), Polybrominated Diphenyl Ethers(PBDEs)

Part No.	Test Items		XRF Screening Result(mg/kg)	Chemical Test Result(mg/kg)	Conclusion
1	Pb		BL	/	Pass
	Cd		BL	/	
	Hg		BL	/	
	Cr	Cr(VI)	BL	/	
	Br	PBBs	BL	/	
		PBDEs		/	
2	Pb		BL	/	Pass
	Cd		BL	/	
	Hg		BL	/	
	Cr	Cr(VI)	BL	/	
	Br	PBBs	BL	/	
		PBDEs		/	

3	Pb		BL	/	Pass
	Cd		BL	/	
	Hg		BL	/	
	Cr	Cr(VI)	BL	/	
	Br	PBBs	BL	/	
		PBDEs		/	
4	Pb		BL	/	Pass
	Cd		BL	/	
	Hg		BL	/	
	Cr	Cr(VI)	BL	/	
	Br	PBBs	BL	/	
		PBDEs		/	
5	Pb		BL	/	Pass
	Cd		BL	/	
	Hg		BL	/	
	Cr	Cr(VI)	IN	N.D.	
	Br	PBBs	/	/	
		PBDEs		/	
6	Pb		BL	/	Pass
	Cd		BL	/	
	Hg		BL	/	
	Cr	Cr(VI)	BL	/	
	Br	PBBs	BL	/	
		PBDEs		/	
7	Pb		BL	/	Pass
	Cd		BL	/	
	Hg		BL	/	
	Cr	Cr(VI)	BL	/	
	Br	PBBs	BL	/	
		PBDEs		/	
8	Pb		BL	/	Pass
	Cd		BL	/	
	Hg		BL	/	
	Cr	Cr(VI)	BL	/	
	Br	PBBs	/	/	
		PBDEs		/	

9	Pb		BL	/	Pass
	Cd		BL	/	
	Hg		BL	/	
	Cr	Cr(VI)	BL	/	
	Br	PBBs	/	/	
		PBDEs		/	
10	Pb		BL	/	Pass
	Cd		BL	/	
	Hg		BL	/	
	Cr	Cr(VI)	BL	/	
	Br	PBBs	BL	/	
		PBDEs		/	
11	Pb		BL	/	Pass
	Cd		BL	/	
	Hg		BL	/	
	Cr	Cr(VI)	BL	/	
	Br	PBBs	BL	/	
		PBDEs		/	
12	Pb		BL	/	Pass
	Cd		BL	/	
	Hg		BL	/	
	Cr	Cr(VI)	BL	/	
	Br	PBBs	BL	/	
		PBDEs		/	
13	Pb		BL	/	Pass
	Cd		BL	/	
	Hg		BL	/	
	Cr	Cr(VI)	BL	/	
	Br	PBBs	BL	/	
		PBDEs		/	
14	Pb		BL	/	Pass
	Cd		BL	/	
	Hg		BL	/	
	Cr	Cr(VI)	BL	/	
	Br	PBBs	BL	/	
		PBDEs		/	

15	Pb		BL	/	Pass
	Cd		BL	/	
	Hg		BL	/	
	Cr	Cr(VI)	BL	/	
	Br	PBBs	/	/	
		PBDEs	/	/	
16	Pb		BL	/	Pass
	Cd		BL	/	
	Hg		BL	/	
	Cr	Cr(VI)	BL	/	
	Br	PBBs	/	/	
		PBDEs	/	/	
17	Pb		BL	/	Pass
	Cd		BL	/	
	Hg		BL	/	
	Cr	Cr(VI)	BL	/	
	Br	PBBs	/	/	
		PBDEs	/	/	
18	Pb		BL	/	Pass
	Cd		BL	/	
	Hg		BL	/	
	Cr	Cr(VI)	BL	/	
	Br	PBBs	BL	/	
		PBDEs	/	/	
19	Pb		BL	/	Pass
	Cd		BL	/	
	Hg		BL	/	
	Cr	Cr(VI)	BL	/	
	Br	PBBs	/	/	
		PBDEs	/	/	
20	Pb		IN	181	Pass
	Cd		BL	/	
	Hg		BL	/	
	Cr	Cr(VI)	BL	/	
	Br	PBBs	/	/	
		PBDEs	/	/	

21	Pb		BL	/	Pass
	Cd		BL	/	
	Hg		BL	/	
	Cr	Cr(VI)	BL	/	
	Br	PBBs	/	/	
		PBDEs	/	/	
22	Pb		BL	/	Pass
	Cd		BL	/	
	Hg		BL	/	
	Cr	Cr(VI)	BL	/	
	Br	PBBs	/	/	
		PBDEs	/	/	
23	Pb		BL	/	Pass
	Cd		BL	/	
	Hg		BL	/	
	Cr	Cr(VI)	BL	/	
	Br	PBBs	BL	/	
		PBDEs	/	/	
24	Pb		BL	/	Pass
	Cd		BL	/	
	Hg		BL	/	
	Cr	Cr(VI)	BL	/	
	Br	PBBs	BL	/	
		PBDEs	/	/	
25	Pb		BL	/	Pass
	Cd		BL	/	
	Hg		BL	/	
	Cr	Cr(VI)	BL	/	
	Br	PBBs	BL	/	
		PBDEs	/	/	
26	Pb		BL	/	Pass
	Cd		BL	/	
	Hg		BL	/	
	Cr	Cr(VI)	BL	/	
	Br	PBBs	BL	/	
		PBDEs	/	/	

27	Pb		BL	/	Pass
	Cd		BL	/	
	Hg		BL	/	
	Cr	Cr(VI)	BL	/	
	Br	PBBs	/	/	
		PBDEs		/	
28	Pb		BL	/	Pass
	Cd		BL	/	
	Hg		BL	/	
	Cr	Cr(VI)	BL	/	
	Br	PBBs	BL	/	
		PBDEs		/	
29	Pb		BL	/	Pass
	Cd		BL	/	
	Hg		BL	/	
	Cr	Cr(VI)	BL	/	
	Br	PBBs	BL	/	
		PBDEs		/	
30	Pb		BL	/	Pass
	Cd		BL	/	
	Hg		BL	/	
	Cr	Cr(VI)	BL	/	
	Br	PBBs	BL	/	
		PBDEs		/	
31	Pb		BL	/	Pass
	Cd		BL	/	
	Hg		BL	/	
	Cr	Cr(VI)	BL	/	
	Br	PBBs	BL	/	
		PBDEs		/	
32	Pb		BL	/	Pass
	Cd		BL	/	
	Hg		BL	/	
	Cr	Cr(VI)	BL	/	
	Br	PBBs	BL	/	
		PBDEs		/	

33	Pb		BL	/	Pass
	Cd		BL	/	
	Hg		BL	/	
	Cr	Cr(VI)	BL	/	
	Br	PBBs	/	/	
		PBDEs		/	
34	Pb		BL	/	Pass
	Cd		BL	/	
	Hg		BL	/	
	Cr	Cr(VI)	BL	/	
	Br	PBBs	IN	N.D.	
		PBDEs		N.D.	
35	Pb		BL	/	Pass
	Cd		BL	/	
	Hg		BL	/	
	Cr	Cr(VI)	IN	N.D.	
	Br	PBBs	/	/	
		PBDEs		/	
36	Pb		BL	/	Pass
	Cd		BL	/	
	Hg		BL	/	
	Cr	Cr(VI)	BL	/	
	Br	PBBs	BL	/	
		PBDEs		/	
37	Pb		BL	/	Pass
	Cd		BL	/	
	Hg		BL	/	
	Cr	Cr(VI)	BL	/	
	Br	PBBs	/	/	
		PBDEs		/	
38	Pb		BL	/	Pass
	Cd		BL	/	
	Hg		BL	/	
	Cr	Cr(VI)	BL	/	
	Br	PBBs	BL	/	
		PBDEs		/	

39	Pb		BL	/	Pass
	Cd		BL	/	
	Hg		BL	/	
	Cr	Cr(VI)	BL	/	
	Br	PBBs	/	/	
		PBDEs	/	/	
40	Pb		BL	/	Pass
	Cd		BL	/	
	Hg		BL	/	
	Cr	Cr(VI)	IN	N.D.	
	Br	PBBs	/	/	
		PBDEs	/	/	
41	Pb		BL	/	Pass
	Cd		BL	/	
	Hg		BL	/	
	Cr	Cr(VI)	BL	/	
	Br	PBBs	BL	/	
		PBDEs	/	/	
42	Pb		BL	/	Pass
	Cd		BL	/	
	Hg		BL	/	
	Cr	Cr(VI)	BL	/	
	Br	PBBs	/	/	
		PBDEs	/	/	
43	Pb		BL	/	Pass
	Cd		BL	/	
	Hg		BL	/	
	Cr	Cr(VI)	BL	/	
	Br	PBBs	/	/	
		PBDEs	/	/	
44	Pb		BL	/	Pass
	Cd		BL	/	
	Hg		BL	/	
	Cr	Cr(VI)	BL	/	
	Br	PBBs	/	/	
		PBDEs	/	/	

45	Pb		BL	/	Pass
	Cd		BL	/	
	Hg		BL	/	
	Cr	Cr(VI)	BL	/	
	Br	PBBs	/	/	
		PBDEs		/	
46	Pb		BL	/	Pass
	Cd		BL	/	
	Hg		BL	/	
	Cr	Cr(VI)	BL	/	
	Br	PBBs	BL	/	
		PBDEs		/	
47	Pb		BL	/	Pass
	Cd		BL	/	
	Hg		BL	/	
	Cr	Cr(VI)	BL	/	
	Br	PBBs	BL	/	
		PBDEs		/	
48	Pb		BL	/	Pass
	Cd		BL	/	
	Hg		BL	/	
	Cr	Cr(VI)	BL	/	
	Br	PBBs	/	/	
		PBDEs		/	
49	Pb		BL	/	Pass
	Cd		BL	/	
	Hg		BL	/	
	Cr	Cr(VI)	BL	/	
	Br	PBBs	BL	/	
		PBDEs		/	
50	Pb		BL	/	Pass
	Cd		BL	/	
	Hg		BL	/	
	Cr	Cr(VI)	BL	/	
	Br	PBBs	BL	/	
		PBDEs		/	

51	Pb		BL	/	Pass
	Cd		BL	/	
	Hg		BL	/	
	Cr	Cr(VI)	BL	/	
	Br	PBBs	BL	/	
		PBDEs		/	
52	Pb		BL	/	Pass
	Cd		BL	/	
	Hg		BL	/	
	Cr	Cr(VI)	BL	/	
	Br	PBBs	/	/	
		PBDEs		/	
53	Pb		BL	/	Pass
	Cd		BL	/	
	Hg		BL	/	
	Cr	Cr(VI)	BL	/	
	Br	PBBs	BL	/	
		PBDEs		/	
54	Pb		BL	/	Pass
	Cd		BL	/	
	Hg		BL	/	
	Cr	Cr(VI)	BL	/	
	Br	PBBs	BL	/	
		PBDEs		/	
55	Pb		BL	/	Pass
	Cd		BL	/	
	Hg		BL	/	
	Cr	Cr(VI)	BL	/	
	Br	PBBs	BL	/	
		PBDEs		/	
56	Pb		BL	/	Pass
	Cd		BL	/	
	Hg		BL	/	
	Cr	Cr(VI)	BL	/	
	Br	PBBs	IN	N.D.	
		PBDEs		N.D.	

57	Pb		BL	/	Pass
	Cd		BL	/	
	Hg		BL	/	
	Cr	Cr(VI)	BL	/	
	Br	PBBs	/	/	
		PBDEs	/	/	
58	Pb		BL	/	Pass
	Cd		BL	/	
	Hg		BL	/	
	Cr	Cr(VI)	BL	/	
	Br	PBBs	/	/	
		PBDEs	/	/	
59	Pb		BL	/	Pass
	Cd		BL	/	
	Hg		BL	/	
	Cr	Cr(VI)	IN	N.D.	
	Br	PBBs	BL	/	
		PBDEs	BL	/	
60	Pb		BL	/	Pass
	Cd		BL	/	
	Hg		BL	/	
	Cr	Cr(VI)	BL	/	
	Br	PBBs	BL	/	
		PBDEs	BL	/	
61	Pb		BL	/	Pass
	Cd		BL	/	
	Hg		BL	/	
	Cr	Cr(VI)	BL	/	
	Br	PBBs	BL	/	
		PBDEs	BL	/	
62	Pb		BL	/	Pass
	Cd		BL	/	
	Hg		BL	/	
	Cr	Cr(VI)	BL	/	
	Br	PBBs	/	/	
		PBDEs	/	/	

Bis-(2-ethylhexyl) Phthalate (DEHP), Benzyl butyl Phthalate (BBP), Dibutyl Phthalate (DBP) and Diisobutyl Phthalate(DIBP)

Test Items	Result(mg/kg)		
	1+2+3	4+6+7	10+11
Bis-(2-ethylhexyl) Phthalate (DEHP)	N.D.	N.D.	N.D.
Benzyl butyl Phthalate (BBP)	N.D.	N.D.	N.D.
Dibutyl Phthalate (DBP)	N.D.	N.D.	N.D.
Diisobutyl Phthalate(DIBP)	N.D.	N.D.	N.D.
Conclusion	Pass	Pass	Pass

Test Items	Result(mg/kg)		
	12	13+14+18	23+24+25
Bis-(2-ethylhexyl) Phthalate (DEHP)	N.D.	N.D.	N.D.
Benzyl butyl Phthalate (BBP)	N.D.	N.D.	N.D.
Dibutyl Phthalate (DBP)	N.D.	N.D.	N.D.
Diisobutyl Phthalate(DIBP)	N.D.	N.D.	N.D.
Conclusion	Pass	Pass	Pass

Test Items	Result(mg/kg)		
	26+28+29	30+31+32	34+36+38
Bis-(2-ethylhexyl) Phthalate (DEHP)	N.D.	N.D.	N.D.
Benzyl butyl Phthalate (BBP)	N.D.	N.D.	N.D.
Dibutyl Phthalate (DBP)	N.D.	N.D.	N.D.
Diisobutyl Phthalate(DIBP)	N.D.	N.D.	N.D.
Conclusion	Pass	Pass	Pass

Test Items	Result(mg/kg)		
	41+47	46	49
Bis-(2-ethylhexyl) Phthalate (DEHP)	N.D.	N.D.	N.D.
Benzyl butyl Phthalate (BBP)	N.D.	N.D.	N.D.
Dibutyl Phthalate (DBP)	N.D.	N.D.	N.D.
Diisobutyl Phthalate(DIBP)	N.D.	N.D.	N.D.
Conclusion	Pass	Pass	Pass

Test Items	Result(mg/kg)		
	50+51	52+53	54
Bis-(2-ethylhexyl) Phthalate (DEHP)	N.D.	N.D.	N.D.
Benzyl butyl Phthalate (BBP)	N.D.	N.D.	N.D.
Dibutyl Phthalate (DBP)	N.D.	N.D.	N.D.
Diisobutyl Phthalate(DIBP)	N.D.	N.D.	N.D.
Conclusion	Pass	Pass	Pass

Test Items	Result(mg/kg)		
	55	56+59	60+61
Bis-(2-ethylhexyl) Phthalate (DEHP)	N.D.	N.D.	N.D.
Benzyl butyl Phthalate (BBP)	N.D.	N.D.	N.D.
Dibutyl Phthalate (DBP)	N.D.	N.D.	N.D.
Diisobutyl Phthalate(DIBP)	N.D.	N.D.	N.D.
Conclusion	Pass	Pass	Pass

Note:

- 1.N.D. = Not Detected (<MDL)
 MDL = Method Detection Limit
 1 mg/kg = 1ppm =0.0001%
 /=Not Regulated or Not Applicable
2. BL = Below the XRF screening limit
 IN = Further chemical test will be conducted when the screening result inconclusive
 OL = Further chemical test will be conducted while the result is above the screening limit.
3. For metal samples, the sample is negative for Cr(VI), if the Cr(VI) concentration is less than 0.10 $\mu\text{g}/\text{cm}^2$, the coating is considered a non- Cr(VI) based coating;
 The sample is positive for Cr(VI), if the Cr(VI) concentration is greater than 0.13 $\mu\text{g}/\text{cm}^2$,
 The sample coating is considered to contain Cr(VI);
 The result is considered to be inconclusive, the Cr(VI) concentration is between the 0.10 $\mu\text{g}/\text{cm}^2$ and 0.13 $\mu\text{g}/\text{cm}^2$, unavoidable coating variations may influence the determination.
 Because the storage condition and production date of the sample are not known, the test results of the sample of hexavalent chromium can only represent the state of hexavalent chromium in the samples tested.

Remark: 1. When conducting the test for PBBs&PBDEs, XRF was introduced to screen Br Exclusively; When conducting the test for Hexavalent Chromium, XRF was introduced to screen Chromium exclusively.

Test Method:

1. With reference to IEC 62321-1: 2013 Ed.1.0, IEC 62321-2:2021 Ed.2.0, IEC 62321-3-1:2013 Ed.1.0. XRF screening limits in mg/kg for regulated elements in various matrices.

Element	Limit of IEC 62321-3-1:2013 Ed.1.0 (mg/kg)		
	Polymers	Metals	Composite material
Pb	$BL \leq (700-3\sigma) < X$ $< (1300+3\sigma) \leq OL$	$BL \leq (700-3\sigma) < X$ $< (1300+3\sigma) \leq OL$	$BL \leq (500-3\sigma) < X$ $< (1500+3\sigma) \leq OL$
Cd	$BL \leq (70-3\sigma) < X <$ $(130+3\sigma) \leq OL$	$BL \leq (70-3\sigma) < X <$ $(130+3\sigma) \leq OL$	$LOD < X < (150+3\sigma)$ $\leq OL$
Hg	$BL \leq (700-3\sigma) < X$ $< (1300+3\sigma) \leq OL$	$BL \leq (700-3\sigma) < X$ $< (1300+3\sigma) \leq OL$	$BL \leq (500-3\sigma) < X$ $< (1500+3\sigma) \leq OL$
Cr	$BL \leq (700-3\sigma) < X$	$BL \leq (700-3\sigma) < X$	$BL \leq (500-3\sigma) < X$
Br	$BL \leq (300-3\sigma) < X$	/	$BL \leq (250-3\sigma) < X$

Note: BL= Below the XRF screening limit
 OL=Over the XRF screening limit
 X=The symbol "X" marks the region where further investigation is necessary.
 3σ =The reproducibility of analytical instruments
 LOD= Detection limit

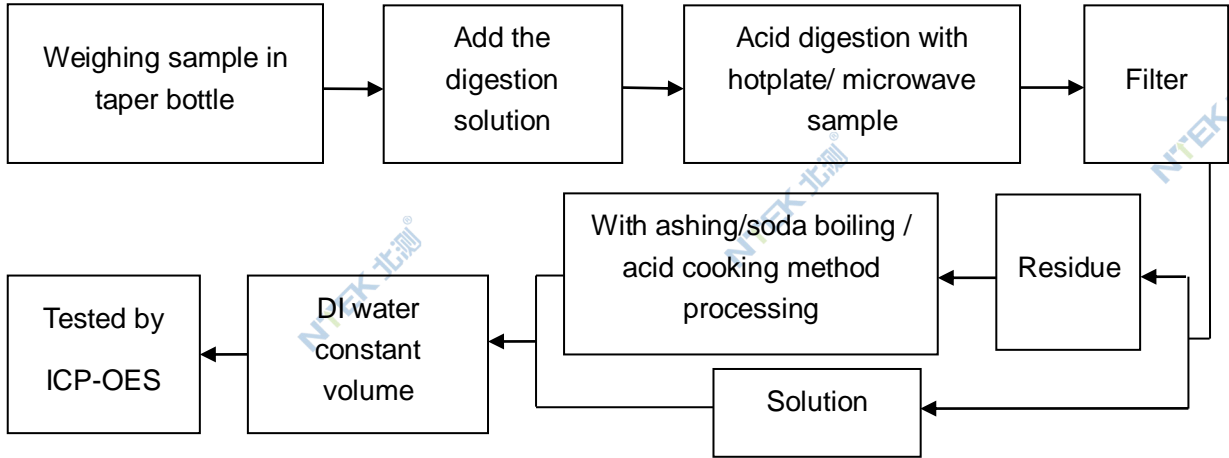
2. Chemical Test

Test item	Test method	Test instrument	MDL	Limit [△]
Lead (Pb)	IEC 62321-5:2013 Ed.1.0	ICP-OES	2 mg/kg	1000 mg/kg
Cadmium (Cd)	IEC 62321-5:2013 Ed.1.0	ICP-OES	2 mg/kg	100 mg/kg
Mercury (Hg)	IEC 62321-4:2013+AMD1:2017	ICP-OES	2 mg/kg	1000 mg/kg
Hexavalent Chromium(Cr(VI))	IEC 62321-7-1:2015 Ed.1.0	UV-Vis	0.10 µg/cm ²	1000 mg/kg
	IEC 62321-7-2:2017 Ed.1.0		8 mg/kg	
Polybrominated Biphenyls(PBBs)	IEC 62321-6:2015 Ed.1.0	GC-MS	5 mg/kg	1000 mg/kg
Polybrominated, Diphenyl Ethers(PBDEs)	IEC 62321-6:2015 Ed.1.0	GC-MS	5 mg/kg	1000 mg/kg
Bis-(2-ethylhexyl) Phthalate (DEHP)	IEC 62321-8:2017 Ed.1.0	GC-MS	30 mg/kg	1000 mg/kg
Benzyl butyl Phthalate (BBP)	IEC 62321-8:2017 Ed.1.0	GC-MS	30 mg/kg	1000 mg/kg
Dibutyl Phthalate (DBP)	IEC 62321-8:2017 Ed.1.0	GC-MS	30 mg/kg	1000 mg/kg
Diisobutyl Phthalate (DIBP)	IEC 62321-8:2017 Ed.1.0	GC-MS	30 mg/kg	1000 mg/kg

[△]The limit is quoted from RoHS Directive (EU) 2015/863 amending Annex II to Directive 2011/65/EU.

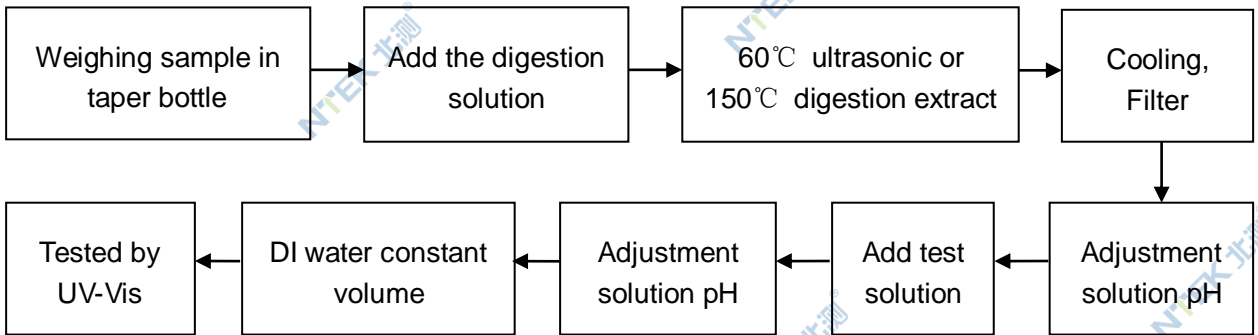
Test Flow:

1. Lead(Pb), Cadmium(Cd) , Mercury (Hg)

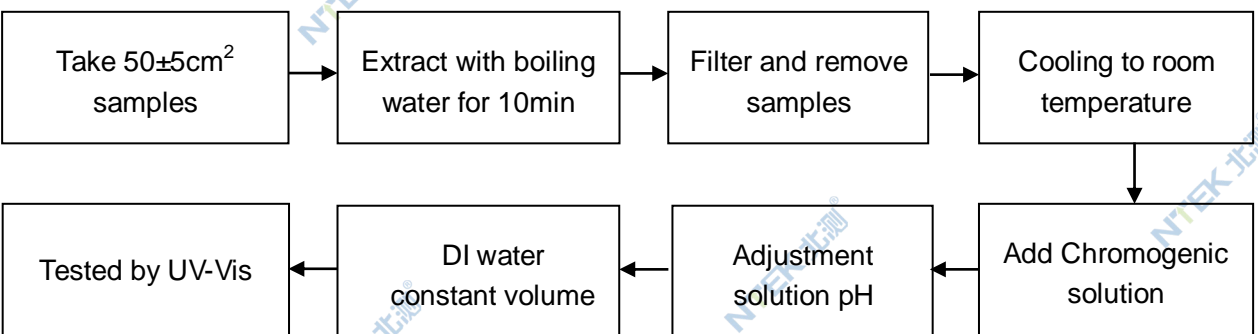


2. Hexavalent Chromium(Cr(VI))

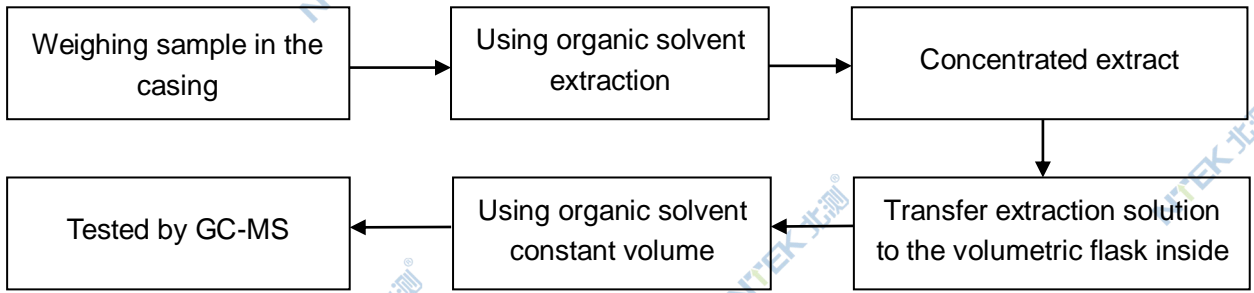
2.1 Non- metal sample(s)



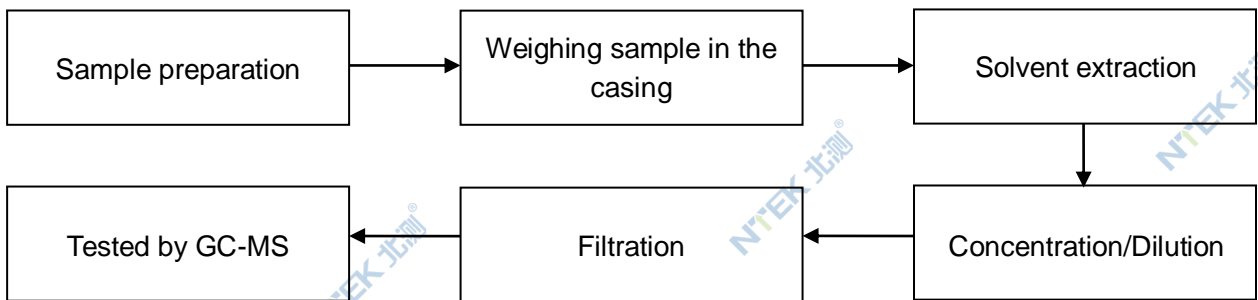
2.2 Metal sample(s)



3. PBBs/ PBDEs



4. Phthalates



Sample photo(s):



Fig.1 (Finished photo)



Fig.2 (Finished photo)



Fig.3 (Finished photo)

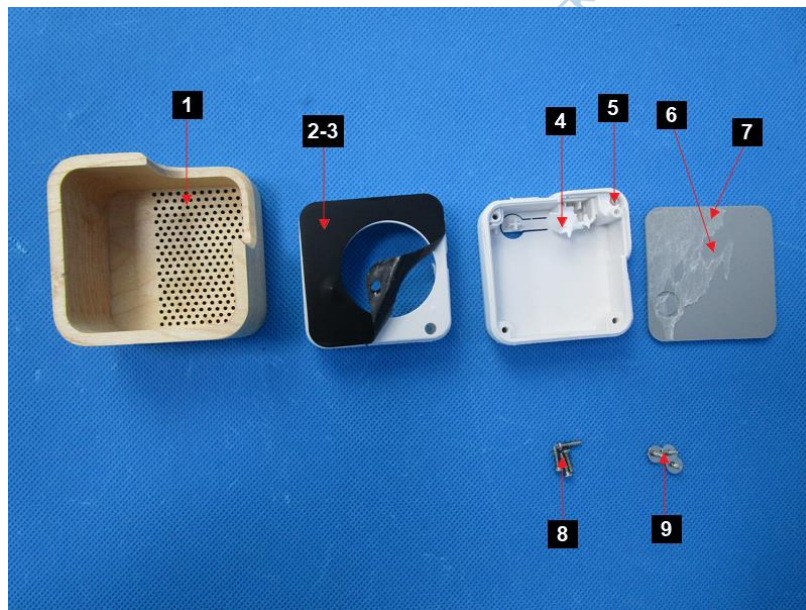


Fig.4



Fig.5

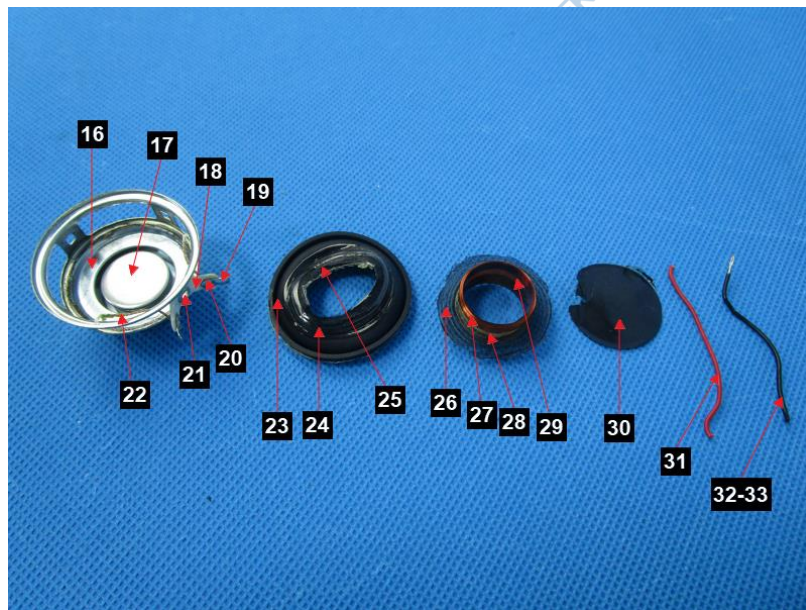


Fig.6

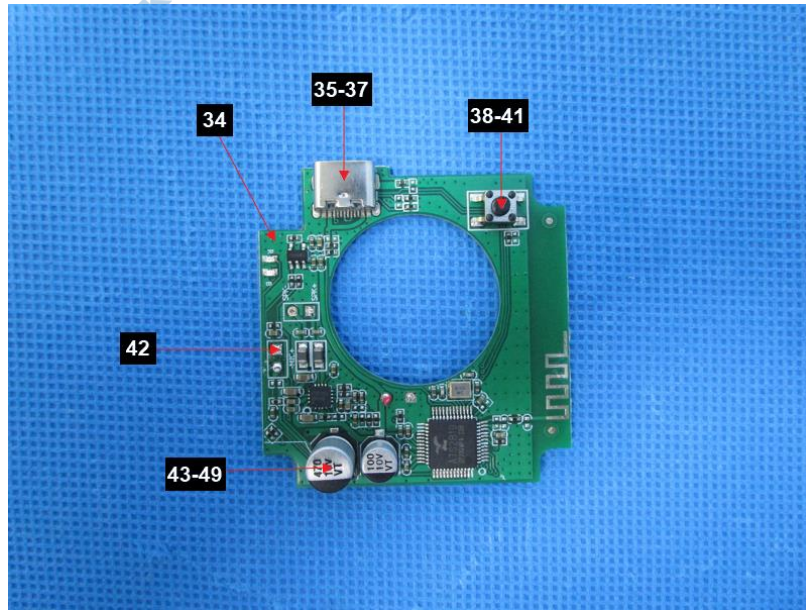


Fig.7

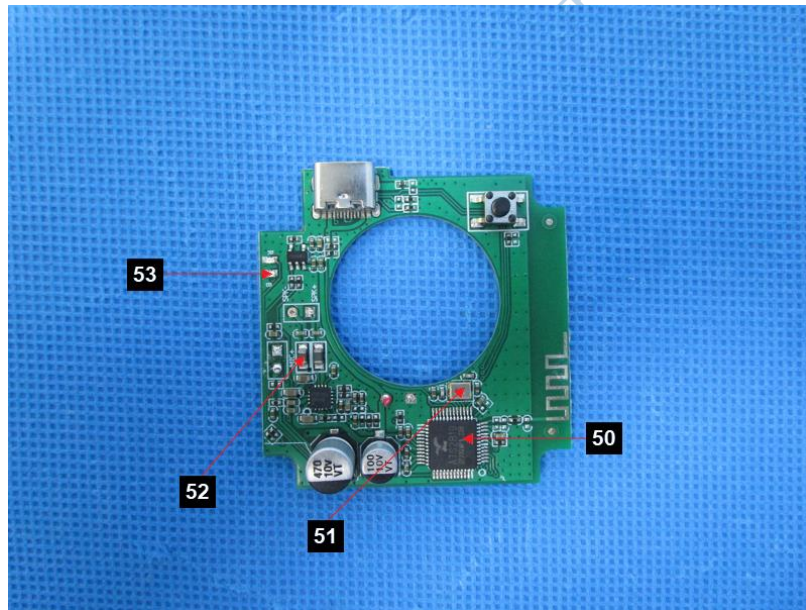


Fig.8

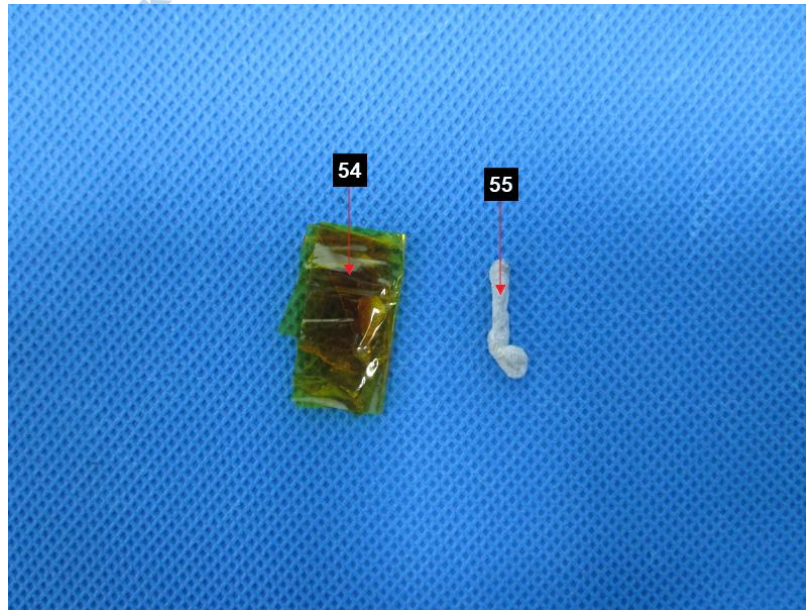


Fig.9

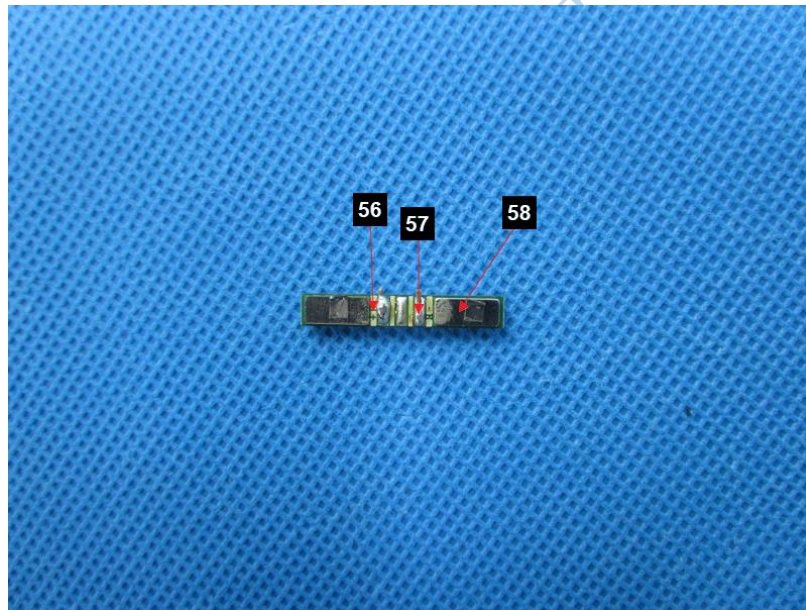


Fig.10

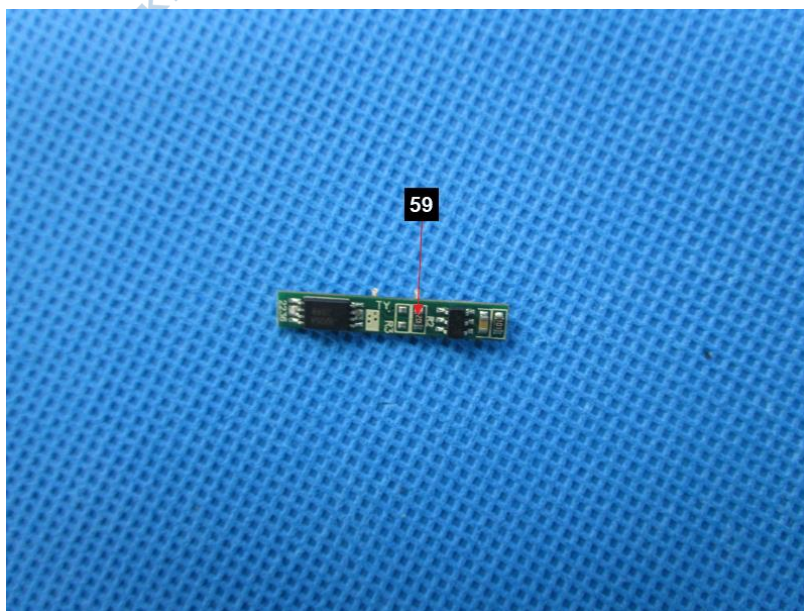


Fig.11

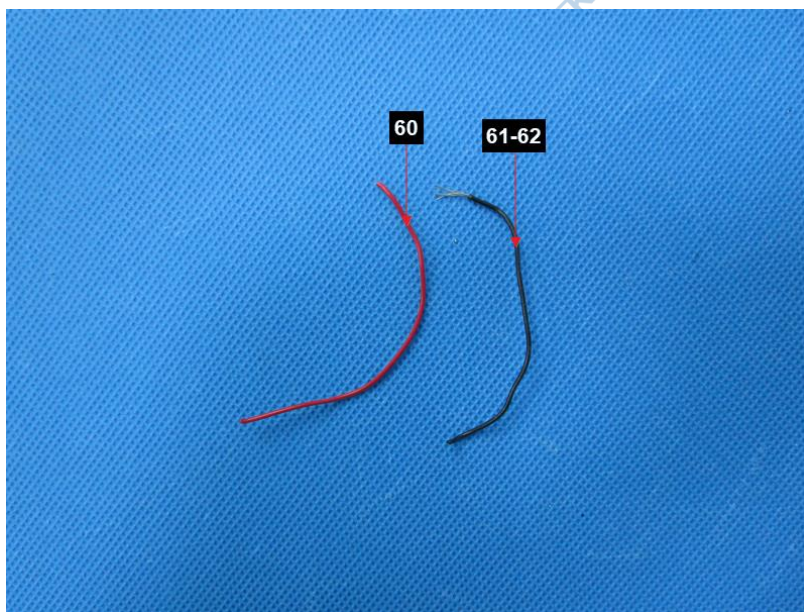


Fig.12

****End of Report****

The test results or data in this report will be used only for education, scientific research, enterprise product development and internal quality control or other purposes.

The test report is effective only with both signature and specialized stamp, The result(s) shown in this report refer only to the sample(s) tested. Without written approval of NTEK, this report can't be reproduced except in full.